

Research



Cite this article: McCabe JD, Yin H, Cruz J, Radeloff V, Pidgeon A, Bonter DN, Zuckerberg B. 2018 Prey abundance and urbanization influence the establishment of avian predators in a metropolitan landscape. *Proc. R. Soc. B* **285**: 20182120.
<http://dx.doi.org/10.1098/rsob.2018.2120>

Received: 20 September 2018

Accepted: 18 October 2018

Subject Category:

Ecology

Subject Areas:

ecology

Keywords:

Accipiter hawks, colonization, dynamic occupancy models, Landsat, prey abundance, urbanization

Author for correspondence:

Jennifer D. McCabe

e-mail: jmccabe4@wisc.edu

Electronic supplementary material is available online at <https://dx.doi.org/10.6084/m9.figshare.c.4278851>.

Prey abundance and urbanization influence the establishment of avian predators in a metropolitan landscape

Jennifer D. McCabe¹, He Yin¹, Jennyffer Cruz¹, Volker Radeloff¹, Anna Pidgeon¹, David N. Bonter² and Benjamin Zuckerberg¹

¹Department of Forest and Wildlife Ecology, University of Wisconsin-Madison, 266 Russell Laboratory, Madison, WI 53706, USA

²Cornell Lab of Ornithology, 159 Sapsucker Woods Road, Ithaca, NY 14850, USA

JDM, 0000-0001-6252-4692

Urbanization causes the simplification of natural habitats, resulting in animal communities dominated by exotic species with few top predators. In recent years, however, many predators such as hawks, and in the US coyotes and cougars, have become increasingly common in urban environments. Hawks in the *Accipiter* genus, especially, are recovering from widespread population declines and are increasingly common in urbanizing landscapes. Our goal was to identify factors that determine the occupancy, colonization and persistence of *Accipiter* hawks in a major metropolitan area. Through a novel combination of citizen science and advanced remote sensing, we quantified how urban features facilitate the dynamics and long-term establishment of *Accipiter* hawks. Based on data from Project FeederWatch, we quantified 21 years (1996–2016) of changes in the spatio-temporal dynamics of *Accipiter* hawks in Chicago, IL, USA. Using a multi-season occupancy model, we estimated Cooper's (*Accipiter cooperii*) and sharp-shinned (*A. striatus*) hawk occupancy dynamics as a function of tree canopy cover, impervious surface cover and prey availability. In the late 1990s, hawks occupied 26% of sites around Chicago, but after two decades, their occupancy fluctuated close to 67% of sites and they colonized increasingly urbanized areas. Once established, hawks persisted in areas with high levels of impervious surfaces as long as those areas supported high abundances of prey birds. Urban areas represent increasingly habitable environments for recovering predators, and understanding the precise urban features that drive colonization and persistence is important for wildlife conservation in an urbanizing world.

1. Introduction

Close to 4 billion people live in urban areas, and that number will grow to 6.5 billion by 2070 [1,2]. Urbanization is the most irreversible of anthropogenic disturbances [3,4], and as cities expand across the planet, urban ecosystems are becoming an increasingly important environmental setting for shaping ecological processes [5–7]. Although urbanization fundamentally alters biodiversity, urban and peri-urban areas offer novel habitats and food resources for a number of species dependent on characteristics of the urban environment [7]. For example, cities with more green spaces [8,9] or cities close to more intact, natural areas [10,11] generally support a higher abundance and diversity of plants and animals.

In recent decades, many predators recovering from low population sizes due to years of persecution [12] and depressed reproduction due to biomagnification of pesticides in food chains [13] are repatriating natural landscapes and colonizing urban environments. Residential yards and city parks provide suitable habitat for recovering predators such as coyotes (*Canis latrans*) [14], cougars (*Puma concolor*) [15] and merlins (*Falco columbarius*) [16]. Many of these

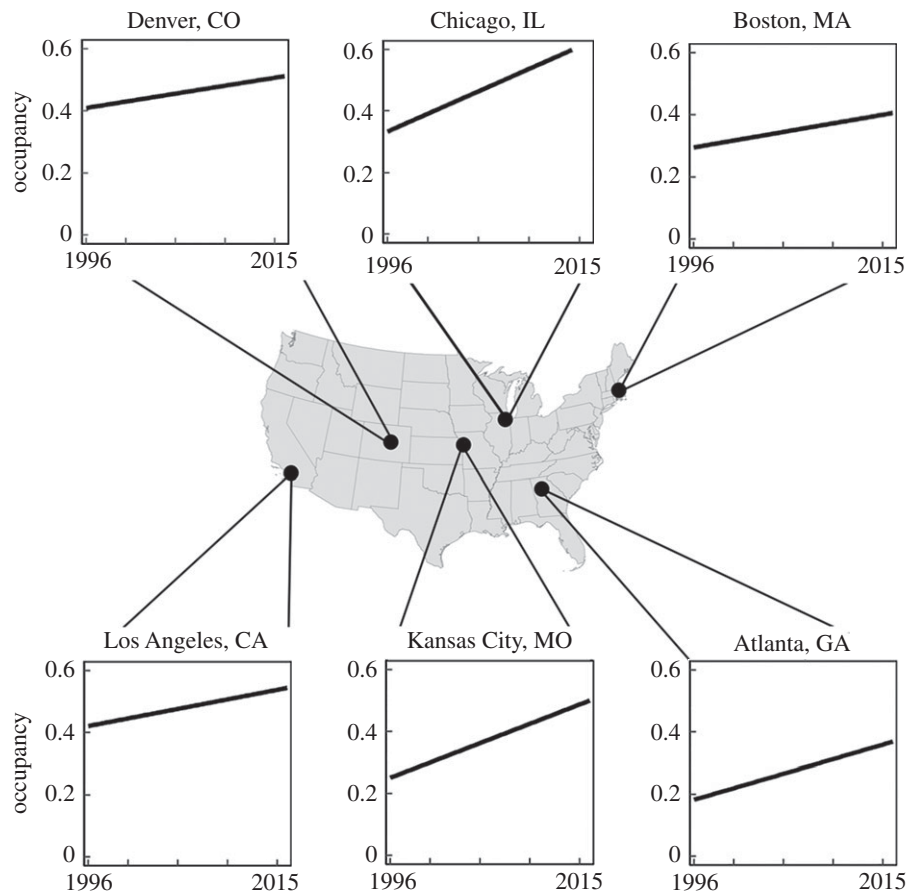


Figure 1. Pattern of hawk occupancy (the proportion of sites at which an *Accipiter* hawk was present during one or more sampling periods) during 1996–2016 in six cities across the United States. Yearly occupancy was calculated using raw Project FeederWatch counts.

predators not only use urban environments [17] but reach high densities and successfully reproduce [18–22]. For example, peregrine falcons (*Falco peregrinus*) were historically rare in eastern North America [23] and thought to be extirpated in the mid-1960s [24,25], but after successful captive breeding and reintroduction, they have become common in cities, taking advantage of artificial nesting sites (e.g. window ledges and suspension bridges) and ample prey [26].

Urbanization creates a complex mosaic of impervious surfaces (ground covered by impermeable surfaces such as buildings and roads) interspersed with green spaces (the inverse of imperviousness) of natural and semi-natural habitats [27,28]. Green spaces encompass a diversity of urban open spaces such as city parks, golf courses, cemeteries and abandoned lots [9]. This diversity of both natural and human-modified land cover probably plays a role in how and where predators establish within the urban landscape [29]. For example, in Chicago, IL, USA, mesocarnivores were more likely to colonize and persist in green spaces with higher tree canopy cover and lower housing density than more developed areas [11]. Likewise, the recent colonization of northern goshawks (*Accipiter gentilis* L.) into Hamburg, Germany was facilitated by afforestation and forest maturation [30]. Thus, despite the presence of built structures and high human density, it is evident that green spaces within cities represent available habitat for recovering predator populations.

In addition to green spaces, urban areas offer food resources that can be highly concentrated and predictable in time and space [31,32], and predators that exploit such resources are rewarded with ample prey [33–36]. For example, after the recovery from a rabies outbreak that

swept through central Europe in the late 1960s, red foxes (*Vulpes vulpes*) shifted to breeding in developed areas and took advantage of anthropogenic food resources, which allowed them to persist in urban environments [34]. Similarly, in Maharashtra, India, leopards (*Panthera pardus*) persist in urban settings due to the high density of domestic animals that comprise 87% of their diet [37]. Millions of households in cities throughout the world feed wild birds and sustain their populations at elevated densities [38]. This hyperabundance of prey, supported by supplementary feeding, provides an important and predictable food resource for avian predators, such as Cooper's (*Accipiter cooperii*) and sharp-shinned (*A. striatus*) hawks that are often attracted to the high levels of bird activity at feeders [39]. Raptors persisting in urban environments that feed primarily on bird species (as opposed to small mammals) have relatively high breeding performance, suggesting that prey availability is an important factor in determining their success [40].

In the mid-twentieth century, *Accipiter* hawks mirrored the widespread declines of other recovering predators, but their populations are rebounding to the point where they are now increasingly common in urban environments [41]. The increase of hawk populations in cities is a widespread phenomenon across the USA (figure 1), and yet dynamics and mechanisms underlying the colonization and use of these urban landscapes remains unclear [42]. Furthermore, *Accipiter* hawks are emblematic of the broader suite of recovering and highly adaptable predators colonizing urban environments. They are wide-ranging predators that inhabit a variety of woodland areas and prey on a diversity of bird species [43–45]. Both hawk species share many of the same

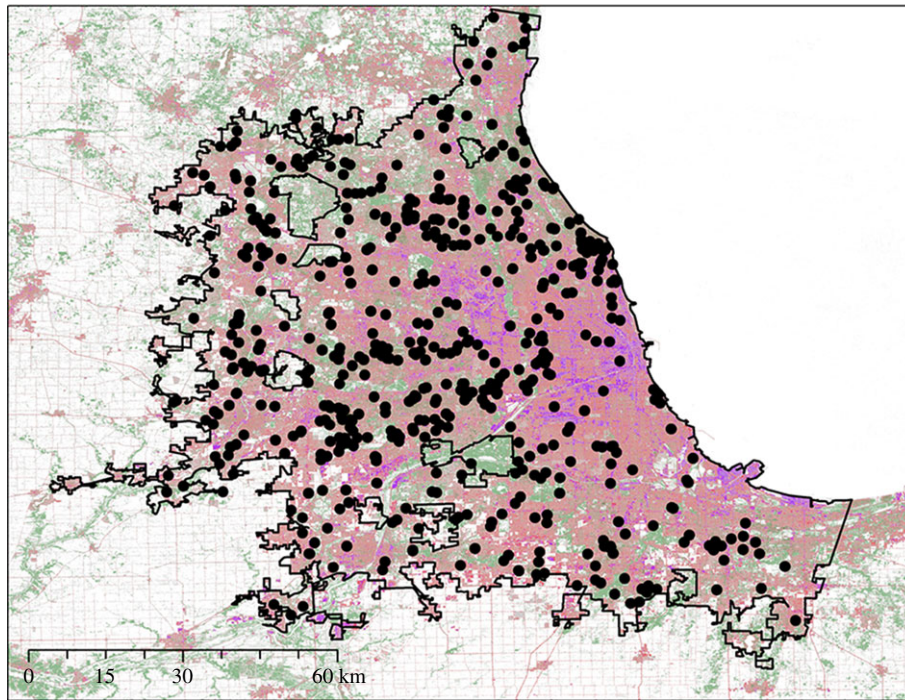


Figure 2. Map depicting the urban study area of Chicago, IL. Black dots represent Project FeederWatch sites from 1996 to 2016. Percentage imperviousness is shown in pink (low) to purple (high) and percentage tree canopy cover is displayed in green (darker green indicates higher percentage tree canopy cover).

habitat and prey preferences, but whereas Cooper's hawks are primarily year-round residents in the eastern USA [46], the distribution of sharp-shinned hawks is a mix of winter and year-round residence [43]. *Accipiter* species are typically 'perch-and-scan' hunters that take mostly medium- to large-bodied avian prey [42–44,47], and in urban areas, they have a propensity to forage at bird feeders. Given their ability to prey on a diversity of species and acclimate to different habitats, *Accipiter* hawks are exemplary species with which to examine the factors facilitating the colonization and persistence of recovering predators in an urban environment.

Herein, we explore which spatio-temporal features of the urban environment facilitate the colonization and persistence of wintering *Accipiter* hawks in Chicago. Although previous research has suggested that green spaces and prey resources are important constraints on predators occurring in urban areas [29,30], few studies have explicitly tested the dynamic role of these limitations on predator establishment. We hypothesized that the distribution of tree cover, imperviousness and prey availability would greatly influence long-term trends and patterns of establishment (colonization and persistence) of *Accipiter* hawks in a major metropolitan area. Specifically, we predicted that areas with higher tree canopy cover would facilitate hawk colonization (i.e. initial arrival) for these woodland predators whereas colonization would be impeded by high amounts of imperviousness. However, their persistence (i.e. ongoing use) of urban areas would require high prey abundance and availability of their preferred prey, with the expectation that higher numbers of backyard birds would promote their persistence in this novel environment.

2. Material and methods

(a) Study area

We studied the winter establishment dynamics of *Accipiter* hawks in Chicago, IL, USA (figure 2), which was well sampled

by our citizen science programme (see Project FeederWatch section). The Chicago metropolitan area is expansive and has a gradient from high- to low-density development in which to investigate the effects of the urban environment on hawk establishment. Winters in Chicago are typically cold and variable [48], with daily temperatures ranging from -10.8 to -29.1°C [49]. Chicago has a diversity of green spaces, but only 14% of the city features tree cover. We delineated our study region using the 2016 Census Bureau's TIGER/Line urban areas shapefile [50] (figure 2). Within this dataset, urban areas were represented by densely developed areas encompassing residential, commercial and other non-residential uses supporting more than 50 000 people [50].

(b) Project FeederWatch

Observations of *Accipiter* hawks and prey species came from Project FeederWatch, a citizen science programme operated by the Cornell Lab of Ornithology and Bird Studies Canada (www.feederwatch.org). The program is designed to study changes in the distribution and abundance of birds in winter across North America. Wells *et al.* [51] reported complete details of the protocol. We chose this winter-based survey because of its many advantages over other broad-scale programmes such as atlases or the North American Breeding Bird Survey. First, repeated counts are collected at fixed locations, second, counts are dynamic, third, survey effort is recorded, and lastly, the programme adequately samples the urban environment. From early November to late April, programme participants recorded the maximum number of each species seen at their supplemental feeding stations (hereafter sites) during a 2-day count and the number of hours (less than 1, 1–4, 4–8, greater than 8) they spent observing their feeder. Participants reported the geographical location of their feeders using online mapping tools, geographical positioning systems or address information. We excluded any sites where the location information was missing or imprecise. To further reduce potential location error, we also combined feeders that were within 25 m of each other. Counts were repeated throughout the season and separated by a minimum of five days, totalling 22 weeks. We used data collected

during the winter seasons ($k = 1996, \dots, 2016$), from all feeder sites ($i = 1, \dots, M$) within the study region, for a total of 554 sites. To decrease the inclusion of migrating hawks in our sample, we selected only observations recorded during December through February, resulting in 13 weeks of replicate surveys ($j = 1, \dots, J$). Sharp-shinned and Cooper's hawks are difficult to differentiate due to their similar size and plumage. Therefore, we combined observations of both species (sharp-shinned = 1082, Cooper's = 4220). We collapsed count observations to identify a site as occupied ($y_{i,j,k} = 1$) for site i , survey j , year k , if hawk abundance was greater than 0, and as unoccupied ($y_{i,j,k} = 0$) if no hawks were observed.

(c) Defining urban features

Our model of hawk establishment dynamics included measures of tree canopy cover, imperviousness, prey availability, annual and weekly temperatures and sampling effort at each Feeder-Watch site. Minimum winter temperatures were included to control for variation in temperature across years as cold winters could facilitate hawk colonization [30]. Temperatures during the week of the survey and participant effort were expected to impact detection of hawks at the feeders [35,45,52].

We considered impervious surface as the inverse of green space and calculated annual imperviousness and tree canopy cover only. We assessed annual imperviousness and tree canopy cover for Chicago using LandSat data. First, we downloaded all available LandSat TM/ETM+/OLI surface reflectance in L1T format covering Chicago (Landsat path/row 023/031). We then masked out cloud, snow and shadow using LandSat QA band, and calculated the mean for each reflectance band for each year [53]. To reduce uncertainties, we included ± 1 -year imagery around the target years. Next, we obtained ground reference data using a 1 m resolution land cover map provided by Chicago Metropolitan Agency for Planning (CMAP) [54] and calculated per-pixel percentage of impervious surface and tree canopy cover at the Landsat scale to generate a set of temporally consistent training samples [55]. Using a random forest regression tree, we quantified imperviousness and tree canopy cover for each pixel annually from 1996 to 2016. We then averaged annual 30 m imperviousness and tree canopy cover layers to create a time series for each variable at a spatial unit size of 3 km² (300 hectares). The landscape size approximated the winter home range size of Cooper's hawks [56]. We smoothed annual imperviousness ($\text{imp}_{i,k}$) and tree canopy cover ($\text{tree}_{i,k}$) time series using a trajectory approach [57]. See electronic supplemental material, figure S1 for accuracy assessment of the layers.

Daily minimum temperatures (°C) were extracted from the PRISM climate dataset, a gridded climate model with a 4 × 4 km resolution [58] for winters (December–February) of 1996–2016. Annual mean minimum temperatures (minTemp_k) were aggregated across Chicago, while weekly mean minimum temperatures ($\text{tmin}_{i,j,k}$) were extracted for each feeder site. Participant effort ($\text{effort}_{i,j,k}$) was included as five categorical levels (less than 1, 1–4, 4–8, greater than 8 h, NA), where the fifth level included observations with missing effort.

We used two annual metrics of prey availability: (1) average prey abundance ($\text{preyAbund}_{i,k}$) calculated as the maximum number of prey recorded each week then averaged across survey weeks each year; and (2) average prey biomass ($\text{preyMass}_{i,k}$) calculated by weighting total prey abundance by species-specific body masses (from: Sibley [59] and iBird [60]).

We tested for collinearity among predictors using Pearson's product correlations coefficient (r). Tree canopy cover and impervious surface were negatively correlated across the years ($r = -0.59$ to -0.76). Only 30% of the years (1996–2000, 2009) were higher than ± 0.7 , a commonly used threshold for

collinearity [61], however, the overall correlation coefficient was -0.66 . Therefore, we included both landscape variables in the global model. Other predictors were not highly correlated ($r = \pm < 0.7$).

(i) Hawk establishment model

We evaluated whether urban features influenced colonization and persistence of *Accipiter* hawks during 1996–2016 using a dynamic occupancy model implemented within a Bayesian framework [62]. Dynamic occupancy models have two main components: (i) an observational sub-model accounting for imperfect detection of hawk site visitation; and (ii) an ecological sub-model estimating true site occupancy/establishment dynamics as the product of two Markovian (i.e. autoregressive) processes: site colonization and persistence [63]. Observed occupancy, $\gamma_{i,j,k}$, was the result of site i being occupied in year k by a hawk, $z_{i,k}$, and the probability of a hawk being detected at a feeder, $p_{i,j,k}$, in a given j replicate survey week,

$$y_{i,j,k}|z_{i,k} \sim \text{Bernoulli}(z_{i,k} * p_{i,j,k}).$$

The probability of detecting a hawk was in turn related to survey effort, $\text{effort}_{i,j,k}$ and temperature at the time of the survey, $\text{tmin}_{i,j,k}$, through a logit-link function,

$$\text{logit}(p_{i,j,k}) = \tau_{\text{effort}[i,j,k]} + \tau_1 * \text{tmin}_{i,j,k}.$$

Effort was incorporated as categorical intercepts, which represent mean detection probabilities for each level of effort. Vague priors were assumed for the hyperparameters: $\tau_1 \sim N(0,100)$ and $\tau_{\text{effort}} = \log(\mu_0/1 - \mu_0)$; $\mu_0 \sim U(0,1)$. True occupancy, $z_{i,k}$, at site i , year k , was in turn related in the ecological sub-model to the probability of occupancy, $\psi_{i,k}$. In the initial year ($k = 1996$),

$$z_{i,1996} \sim \text{Bernoulli}(\psi_{i,1996}),$$

with the probability of occupancy in turn having a Uniform prior, $\psi_{i,1996} \sim U(0,1)$. For the remaining years ($k = 1997$ –2016), occupancy, $z_{i,k}$, was conditional on occupancy in the previous year,

$$z_{i,k}|z_{i,k-1} \sim \text{Bernoulli}(\psi_{i,k}).$$

The probability of occupancy, $\psi_{i,k}$, in turn depended on the probability that site i persisted as occupied, $\phi_{i,k}$, given it was occupied in the previous year $k - 1$, or if it was unoccupied ($1 - z_{i,k-1}$), on the probability that it was colonized, $\gamma_{i,k}$ [62]:

$$\psi_{i,k} = z_{i,k-1} * \phi_{i,k-1} + (1 - z_{i,k-1}) * \gamma_{i,k}.$$

We related all urban features to the probabilities of colonization and persistence using logit-link functions:

$$\text{logit}(\gamma_{i,k}) = \beta_0 + \beta_1 * \text{imp}_{i,k} + \beta_2 * \text{tree}_{i,k} + \beta_3 * \text{minTemp}_k + \beta_4 * \text{preyMass}_{i,k} + \beta_5 * \text{preyAbund}_{i,k} + \varepsilon_{1,i} + \varepsilon_{2,k}$$

and

$$\text{logit}(\phi_{i,k}) = \alpha_0 + \alpha_1 * \text{imp}_{i,k} + \alpha_2 * \text{tree}_{i,k} + \alpha_3 * \text{minTemp}_k + \alpha_4 * \text{preyMass}_{i,k} + \alpha_5 * \text{preyAbund}_{i,k} + v_{1,i} + v_{2,k}.$$

Predictors were standardized by dividing their means by one standard deviation to aid convergence and comparison among coefficients [64]. Intercepts were modelled as mean effects, $\beta_0 = \log(\mu_1/1 - \mu_1)$; $\mu_1 \sim U(0,1)$, and $\alpha_0 = \log(\mu_2/1 - \mu_2)$; $\mu_2 \sim U(0,1)$. The $n = 1, \dots, 5$ coefficients were given normal priors $\beta_n \sim N(0,100)$, $\alpha_n \sim N(0,100)$. The repeated-measures design was accounted for using random site ID and year effects: $\varepsilon_{1,i} \sim N(0, \sigma_1^2)$ and $\varepsilon_{2,k} \sim N(0, \sigma_2^2)$ with $\sigma_1 \sim U(0,5)$, $\sigma_2 \sim U(0,5)$, $v_1 \sim U(0,5)$ and $v_2 \sim U(0,5)$. Missing values

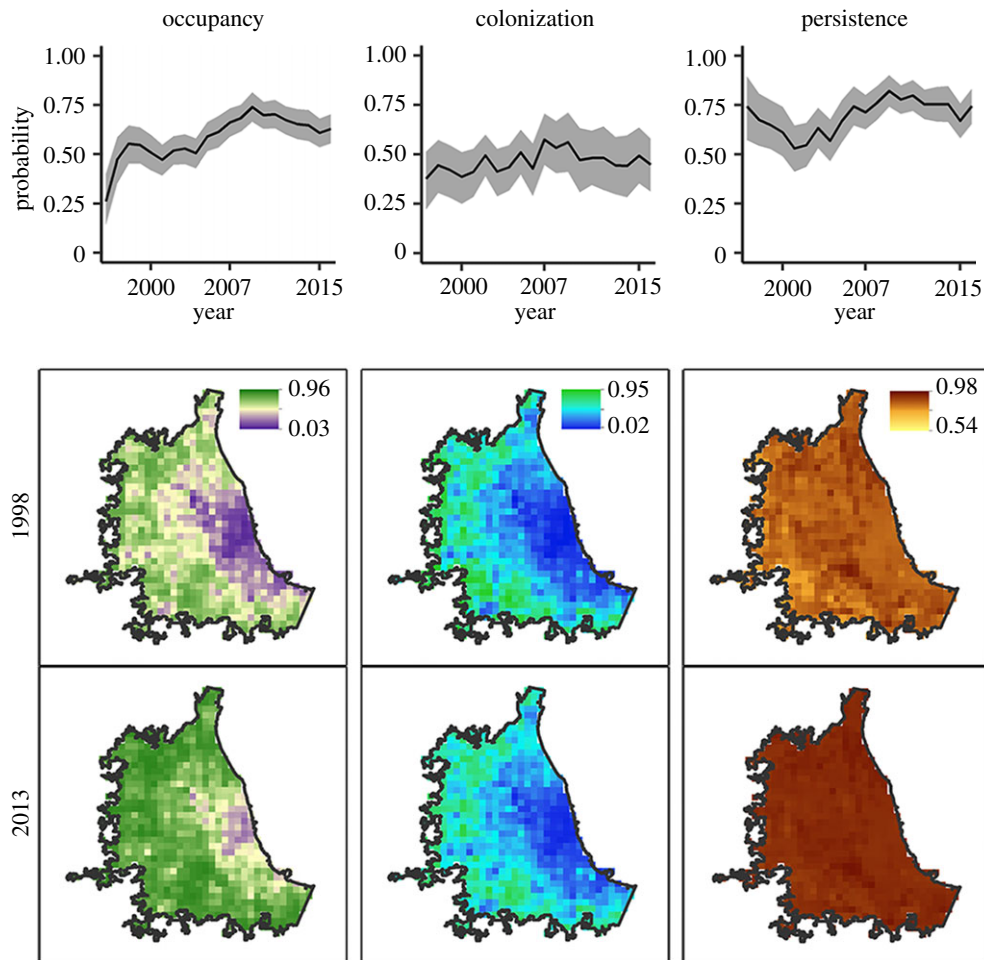


Figure 3. Spatio-temporal patterns in the predicted probability of *Accipiter* occupancy, colonization and persistence in Chicago, IL, USA. The first row depicts the estimated probabilities across the duration of the study (1996–2016), and grey shading represents the 95% credible intervals. Occupancy and colonization probabilities were the highest in the peri-urban areas surrounding the city centre. Persistence was fairly even throughout Chicago, particular in the later years.

were introduced in the measures of prey availability due to the variation in participant retention over the duration of the study. Missing values were estimated by sharing information from the observed values by assigning them common priors [65]. The priors assumed that each prey measure had a Normal distribution with mean and variance values that were common among site and years: $\text{preyMass}_{i,k} \sim N(\xi_1, \tau_1^2)$ and $\text{preyAbun}_{i,k} \sim N(\xi_2, \tau_2^2)$. The associated standard deviations were given vague priors: $\tau_1^2, \tau_2^2 \sim U(0,5)$.

Posterior distributions of the model parameters were estimated using Markov chain Monte Carlo (MCMC) methods available in program JAGs [66], which we called from R [67] with jagsUI [68]. We ran three parallel chains of 120 000 iterations each, with a thinning rate of 30 and 15 000 burn-in. We tested a range of priors for both alpha and beta parameters (results not shown) as an informal regularization approach and found little variation in the estimates. Therefore, we use 95% credible intervals to assess significant parameters. Model convergence was determined visually using the MCMC trace plots and by ensuring the Gelman–Rubin statistic was less than 1.1 [69]. We used parameter estimates to predict and map the establishment dynamics of hawks at a 3 km grid-cell resolution for other parts of the city that were not sampled. Since we estimated our prey availability metrics at the site level, we held them at the year-specific mean when making spatial predictions. To evaluate whether overlapping landscapes (territory buffers) violates the assumption of independence of residual errors we assessed spatial autocorrelation of model residuals using a Moran's I test separately for each year to account for the

different number of sites among years ($\mu = 108.6$, s.d. = 29.2, min = 42, max = 141 sites per year). We found no evidence of spatial autocorrelation ($p > 0.05$) in either colonization or persistence model residuals.

3. Results

The probability of *Accipiter* hawk occupancy exhibited a growth phase between 1996 and 2009, increasing from 26% (95% CI = 14–40%) to 74% (95% CI = 67–81%). After 2009, occupancy stabilized around 67% (figure 3). The probability of hawk occupancy was greatest at the periphery of the city and lowest in the city centre (figure 3). During the study, the probability of colonization increased from 38% (22–51%) to a high of 58% (95% CI = 45–71%) in 2007 (figure 3). Similarly, persistence was high during this time, ranging from 53% (95% CI = 41–65%) in 2001 to a high of 82% (95% CI = 74–90%) in 2009 (figure 3). As occupancy stabilized, colonization and persistence also levelled off at 47% and 75%, respectively (figure 3). Colonization was highest outside the city centre, and this pattern remained relatively constant over time, but persistence was more widespread in the later years (figure 3). Detection probability was negatively, but only marginally significantly (CI overlapped 0 by less than or equal to 0.05), related to minimum weekly temperature, indicating hawks were more likely to be detected at feeders during periods of colder temperatures (table 1). As expected,

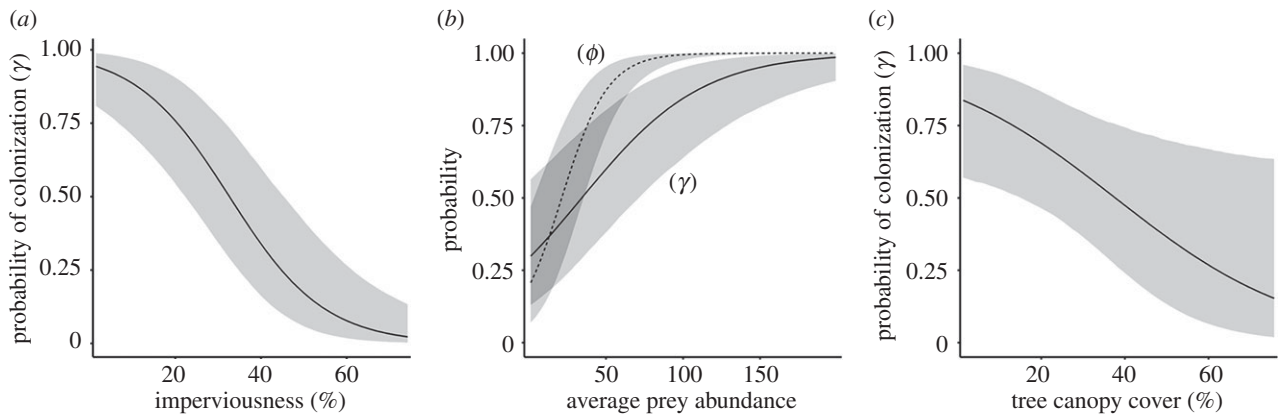


Figure 4. Estimated probability of colonization and/or persistence of *Accipiter* hawks in Chicago as a function of (a) imperviousness, (b) prey abundance and (c) tree canopy cover. As levels of imperviousness and tree canopy cover increased, the probability of colonization decreased significantly. Prey abundance was a strong driver of both hawk colonization and persistence.

Table 1. Coefficient means and 95% credible intervals (CIs) for the model evaluating the effects of landscape, temperature and prey availability (excluding intercepts) on *Accipiter* hawk colonization and persistence in Chicago, IL, USA (1996–2016). Colonization was significantly negatively associated with imperviousness and tree canopy cover and positively associated with related to average prey abundance. Persistence was driven primarily by average prey abundance.

| coefficient | parameter | mean | 2.5% CI | 97.5% CI |
|--------------------------------|------------------------------|-------|---------|----------|
| <i>detection parameters</i> | | | | |
| τ_1 | minimum temperature | −0.04 | −0.08 | 0.01 |
| <i>colonization parameters</i> | | | | |
| β_1 | imperviousness | −1.16 | −1.71 | −0.69 |
| β_2 | tree canopy cover | −0.52 | −1.03 | −0.05 |
| β_3 | minimum temperature | −0.02 | −0.46 | 0.42 |
| β_4 | prey biomass | 0.19 | −0.20 | 0.54 |
| β_5 | average prey | 1.41 | 0.79 | 2.13 |
| σ_1^2 | error for random year effect | 0.66 | 0.24 | 1.20 |
| σ_2^2 | error for random site effect | 1.19 | 0.69 | 1.94 |
| <i>persistence parameters</i> | | | | |
| α_1 | imperviousness | 0.09 | −0.40 | 0.57 |
| α_2 | tree canopy cover | 0.30 | −0.11 | 0.74 |
| α_3 | minimum temperature | −0.15 | −0.82 | 0.48 |
| α_4 | prey biomass | 0.25 | −0.14 | 0.69 |
| α_5 | average prey | 3.66 | 2.60 | 4.96 |
| σ_3^2 | error for random year effect | 1.39 | 0.91 | 1.95 |
| σ_4^2 | error for random site effect | 1.20 | 0.64 | 1.88 |

the low effort resulted in low detection probability (electronic supplementary material, table S1).

Urban development expanded throughout the Chicago area during the time of our study, but most of the increase in imperviousness occurred along the periphery of Chicago with the development of low-density peri-urban communities. The increase in imperviousness occurred before 2008 and there was little change in recent years (electronic supplementary material, figure S2). This stabilization in urbanization coincided with the leveling off in the occupancy rates of hawks (figure 3). During the same time, tree canopy cover increased in Chicago, mainly due to tree growth in peri-urban housing communities. However, throughout the whole

of Chicago, we found minimal increases in imperviousness (25.9–29.8%) and tree canopy cover (21.5–29.2%) over the duration of the study.

Both tree canopy cover and imperviousness influenced the colonization of *Accipiter* hawks. Hawks were less likely to colonize sites with the more impervious surface (table 1) and generally did not colonize sites with over 50% impervious surface (figures 4 and 5). Surprisingly, hawks were more likely to colonize landscapes with lower amounts of tree cover, but this effect was less important than imperviousness (table 1; figure 4). Average prey abundance, but not prey biomass, significantly influenced the probability of hawk colonization and persistence, and hawks were more likely

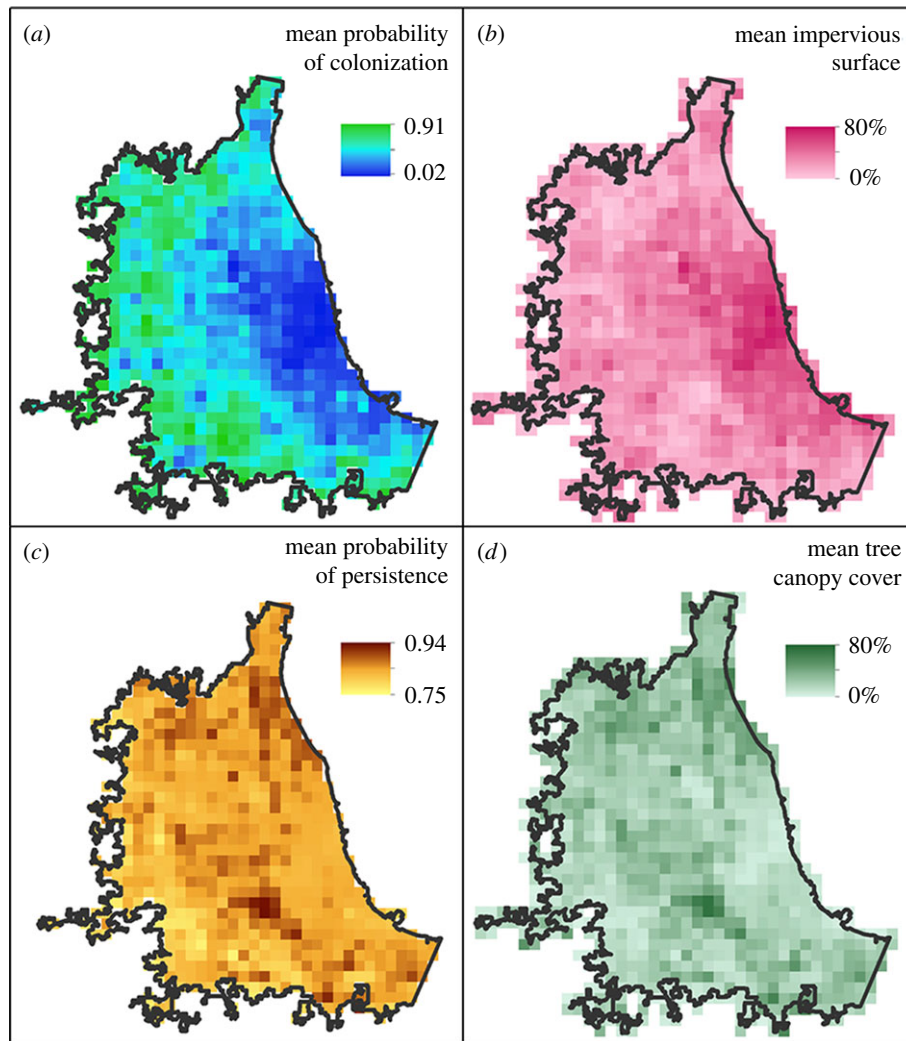


Figure 5. The mean (a) probability of colonization, (b) impervious surface, (c) probability of persistence and (d) tree canopy cover from 1996 to 2016. Impervious surface and tree canopy cover cell values were aggregated using the mean value from a 30 m to a coarser 3 km resolution to match the *Accipiter* winter territory size.

to colonize and persist in sites with a higher abundance of feeder birds, regardless of mass (table 1 and figure 4). The effect of prey abundance was much stronger for persistence than it was for colonization (table 1). The probability of persistence increased at a higher rate with prey abundance than colonization, suggesting that hawks persisted at sites with fewer prey than what they needed to colonize (figure 4). Minimum yearly temperature had no effect on colonization or persistence (table 1).

4. Discussion

Through a novel combination of citizen science and advanced remote sensing, we quantified the importance of urban features in facilitating the dynamics and long-term establishment of *Accipiter* hawks in a major metropolitan area. We found that urban features played an important role in the colonization and persistence of *Accipiter* hawks in Chicago. Hawks initially colonized along the outskirts of the city and were less likely to colonize areas of high imperviousness, avoiding heavily developed areas and landscapes with high tree cover while favouring sites with greater prey abundance (figures 3 and 5). Once hawks colonized a landscape, however, their persistence was dependent only on prey abundance.

During the early years of colonization, *Accipiter* hawks avoided sites with high imperviousness (less green space). This spatial patterning of occupancy demonstrated a clear avoidance of Chicago city centre and greater sustained rates of colonization around the periphery of the city (figures 3 and 5), similar to the spatial patterns of goshawk colonization in Hamburg, Germany [30]. Over time, hawks spread into highly urbanized areas and persisted across a range of urbanization (imperviousness 0–80%). Imperviousness not only reflects the amount of ground covered by impermeable surfaces, but it represents increased human disturbances (e.g. vehicular traffic, anthropogenic noise, domestic pets). Although human disturbance is known to negatively affect species living in natural [70] rural and urban environments [14,71], our results suggest that the hawks may have been more sensitive to these disturbances during the initial phases of colonization.

Contrary to our predictions, colonization was negatively associated with tree canopy cover; sites with less tree cover showed higher levels of colonization (figure 4). This result was unexpected because *Accipiter* hawks are generally considered to be forest-dependent species, at least during the breeding season. Little is known about their wintering habitat across their range [44], but wintering Cooper's hawks in Indiana preferred residential and grassy areas and used forested

habitat less often than expected [72]. Perhaps the reduced dependence on trees is not surprising given that hawks are not nesting in winter, and their primary concern is survival. Food and their preferred prey species may be more readily available in residential areas where humans are providing subsidies for wild birds [47,72,73].

Prey availability can have lasting effects on demographic rates for predators [74–76] and seems especially important for predators colonizing urban environments [29,30,77]. We predicted hawks would preferentially seek out and colonize areas with high average prey abundance and biomass. Indeed, hawks colonized areas with high average prey abundance (figure 4), but prey biomass was not important suggesting that hawks were not selectively seeking out sites with larger-bodied prey. The lack of a relationship between prey biomass and establishment dynamics could be related to the differences in prey preferences between Cooper's and sharp-shinned hawks, which could not be analysed separately in our study. However, the abundance of potential prey is an important component affecting hawk colonization and persistence in Chicago as well as in other urban [30,73,78] and natural environments [79].

Predation is one of the primary forces shaping the species composition of many urban animal communities, as it is in natural settings [31]. Consequently, recovering predator species colonizing urban areas should have a profound effect on their prey communities. For example, Bell *et al.* [78] found that the recolonization of Eurasian sparrowhawks (*Accipiter nisus*) in Britain was correlated with a subsequent decline of house sparrow populations. The long-term association of house sparrows with urban areas caused a release from top-down regulation and a loss of selection favouring anti-predator behaviour, making them vulnerable to the more recent colonization of sparrowhawks [78]. In addition to the house sparrow, the recolonization of urban areas by sparrowhawks in Britain altered the abundance of many common feeder species [80]. Because prey availability was the main factor contributing to the occupancy of *Accipiter* hawk species in Chicago, it is likely the movement of hawks into the city has altered the prey community, as seen with sparrowhawks in Europe, although this remains to be tested. Many studies of urban-dwelling *Accipiter*

hawks in North America have revealed their diet contained a large percentage of invasive bird species such as pigeon, European starling (*Sturnus vulgaris*) and house sparrow [22,47,81]. The potential for predators to reduce population sizes of overabundant or invasive species may reduce their competition pressure on native species for resources [29,36].

The USA is adding about 1 million acres of urban development, the equivalent of Los Angeles, Houston and Phoenix combined, each year [82]. As urbanization increases, there is a pressing need for more comprehensive studies of how the colonization of cities by predators is influenced by the spatio-temporal complexities of urban features. Here, we found that prey availability and patterns of imperviousness (the inverse of urban green spaces) were critical factors in *Accipiter* hawk establishment dynamics in a major metropolitan area. While the factors important in the urban establishment of predators will probably vary by city, determining the relative importance of various urban landscape features provides insight into how recovering predators adapt and colonize novel urban habitats. In addition, urban establishment studies will be important in guiding the management and design of metropolitan environments to facilitate species persistence in these human-modified landscapes.

Data accessibility. The model used in this analysis can be found at <https://github.com/jmccabe8/hawkDynOccModel>. Annual tree canopy cover and impervious surface data can be downloaded at <http://silvis.forest.wisc.edu/data/chicago>. Project FeederWatch data can be requested at <https://feederwatch.org/>.

Authors' contributions. B.Z., J.D.M., H.Y., A.P., V.R. and D.N.B. conceived the ideas and designed the research. Avian data were provided by D.N.B. and H.Y. completed all remote sensing analysis. J.D.M. conducted all statistical analyses with input from J.C. and B.Z. J.D.M. and B.Z. wrote the initial draft of the manuscript, and all authors contributed to the editing and approved the final draft.

Competing interests. We declare we have no competing interests.

Funding. Funding for this research was provided through NASA's Citizen Science for Earth Systems programme (grant no. NNX17AI68A).

Acknowledgements. This research would not have been possible without the contribution of the many Project FeederWatch participants. We thank J. Clare for statistical guidance. We acknowledge additional support from the Department of Forest and Wildlife Ecology, University of Wisconsin-Madison.

References

- Acuto M, Parnell S. 2016 Leave no city behind. *Science* **352**, 873. (doi:10.1126/science.aag1385)
- Seto KC, Roberto S, Fragkias M. 2010 The new geography of contemporary urbanization and the environment. *Annu. Rev. Environ. Resour.* **35**, 167–194. (doi:10.1146/annurev-environ-100809-125336)
- Kowarik I. 2011 Novel urban ecosystems, biodiversity, and conservation. *Environ. Pollut.* **159**, 1974–1983. (doi:10.1016/j.envpol.2011.02.022)
- Radeloff VC *et al.* 2015 The rise of novelty in ecosystems. *Ecol. Appl.* **25**, 2051–2068. (doi:10.1890/14-1781.1)
- Miller JR, Hobbs RJ. 2002 Conservation where people live and work. *Conserv. Biol.* **16**, 330–337. (doi:10.1046/j.1523-1739.2002.00420.x)
- Martin LJ, Blossey B, Ellis E. 2012 Mapping where ecologists work: biases in the global distribution of terrestrial ecological observations. *Front. Ecol. Environ.* **10**, 195–201. (doi:10.1890/110154)
- Ramalho CE, Hobbs RJ. 2012 Time for a change: dynamic urban ecology. *Trends Ecol. Evol.* **27**, 179–188. (doi:10.1016/j.tree.2011.10.008)
- Hahs AK *et al.* 2009 A global synthesis of plant extinction rates in urban areas. *Ecol. Lett.* **12**, 1165–1173. (doi:10.1111/j.1461-0248.2009.01372.x)
- Aronson MFJ *et al.* 2014 A global analysis of the impacts of urbanization on bird and plant diversity reveals key anthropogenic drivers. *Proc. R. Soc. B* **281**, 20133330. (doi:10.1098/rsob.2013.3330)
- Germaine S, Rosenstock SS, Schweinsburg RE, Richardson WS. 1998 Relationships among breeding birds, habitat, and residential development in greater Tucson, Arizona. *Ecol. Appl.* **8**, 680–691. (doi:10.1890/1051-0761(1998)008[0680:RABBHA]2.0.CO;2)
- Gallo T, Fidino M, Lehrer EW, Magle SB. 2017 Mammal diversity and metacommunity dynamics in urban green spaces: implications for urban wildlife conservation. *Ecol. Appl.* **27**, 2330–2341. (doi:10.1002/eap.1611)
- Chapron G, Kaczensky P, Linnell JDC, von Arx M, Huber D, Andr n H, L pez-bao JV, Adamec M. 2014 Recovery of large carnivores in Europe's modern human-dominated landscapes. *Science* **346**, 1517–1519. (doi:10.1126/science.1257553)

13. Cade TJ, Enderson JH, Thelander CG, White CM. 1988 *Peregrine falcon populations: their management and recovery*. Boise, ID: Peregrine Fund.
14. Riley SPD, Sauvajot RM, Fuller TK, York EC, Kamradt DA, Bromley C, Wayne RK. 2003 Effects of urbanization and habitat fragmentation on bobcats and coyotes in Southern California. *Conserv. Biol.* **17**, 566–576. (doi:10.1046/j.1523-1739.2003.01458.x)
15. Morrison CD, Boyce MS, Nielsen SE, Bacon MM. 2014 Habitat selection of a re-colonized cougar population in response to seasonal fluctuations of human activity. *J. Wildl. Manage.* **78**, 1394–1403. (doi:10.1002/jwmg.799)
16. Oliphant LW, Haug E. 1985 Productivity, population density and rate of increase of an expanding Merlin population. *Raptor Res.* **19**, 56–59.
17. Donihue CM, Lambert MR. 2015 Adaptive evolution in urban ecosystems. *Ambio* **44**, 194–203. (doi:10.1007/s13280-014-0547-2)
18. Riley SPD, Hadidian J, Manski DA. 1998 Population density, survival, and rabies in raccoons in an urban national park. *Can. J. Zool.* **76**, 1153–1164. (doi:10.1139/z98-042)
19. Rosatte R, Macinnes MJ, Lawson KF. 1990 Rabies control for urban foxes, skunks, and raccoons. In *Proceedings of the 14th Vertebrate Pest Conference* (eds LR Davis, RE Marsh), pp. 160–167. Davis, CA: University of California.
20. Harris S. 1981 An estimation of the number of foxes (*Vulpes vulpes*) in the city of Bristol, and some possible factors affecting their distribution. *J. Appl. Ecol.* **18**, 455–465. (doi:10.2307/2402406)
21. Crooks KR. 2002 Relative sensitivities of mammalian carnivores to habitat fragmentation. *Conserv. Biol.* **16**, 488–502. (doi:10.1046/j.1523-1739.2002.00386.x)
22. Stout WE, Rosenfield RN. 2010 Colonization, growth, and density of a pioneer Cooper's hawk population in a large metropolitan environment. *J. Raptor Res.* **44**, 255–267. (doi:10.3356/JRR-09-26.1)
23. Enderson JH, Heinrich W, Kiff L, White CM. 1995 Population changes in North American peregrines. *Trans. North Am. Wildl. Nat. Resour. Conf.* **1995**, 142–161.
24. Berger DD, Sindelar CR, Gamble KE. 1969 The status of breeding peregrines in the eastern United States. In *Peregrine falcon populations: their biology and decline* (ed. JJ Hickey), pp. 165–173. Madison, WI: University of Wisconsin Press.
25. Bollengier R (ed.). 1979 *Eastern peregrine falcon recovery plan*. Washington, DC: US Department of the Interior, Fish and Wildlife Service.
26. Gahbauer MA, Box PO, Hx C. 2015 Productivity, mortality, and management of urban peregrine falcons in northeastern North America. *J. Wildl. Manage.* **79**, 10–19. (doi:10.1002/jwmg.803)
27. Rottenborn SC. 1999 Predicting the impacts of urbanization on riparian bird communities. *Biol. Conserv.* **88**, 289–299. (doi:10.1016/S0006-3207(98)00128-1)
28. Alberti M, Marzluff JM, Shulenberg E, Bradley G, Ryan C, Zumbunnen C. 2003 Integrating human into ecology: opportunities and challenges for studying urban ecosystems. *Bioscience* **53**, 1169–1179. (doi:10.1641/0006-3568(2003)053[1169:IHIEOA]2.0.CO;2)
29. Magle SB, Lehrer EW, Fidino M. 2016 Urban mesopredator distribution: examining the relative effects of landscape and socioeconomic factors. *Anim. Conserv.* **19**, 163–175. (doi:10.1111/acv.12231)
30. Rutz C. 2008 The establishment of an urban bird population. *J. Anim. Ecol.* **78**, 182–190. (doi:10.1111/j.1365-2656.2007.0)
31. Shochat E, Warren PS, Faeth SH, McIntyre NE, Hope D. 2006 From patterns to emerging processes in mechanistic urban ecology. *Trends Ecol. Evol.* **21**, 186–191. (doi:10.1016/j.tree.2005.11.019)
32. Lewis DL, Baruch-Mordo S, Wilson KR, Breck SW, Mao JS, Broderick J. 2015 Foraging ecology of black bears in urban environments: guidance for human–bear conflict mitigation. *Ecosphere* **6**, 1–18. (doi:10.1890/ES15-00137.1)
33. Fischer JD, Cleeton SH, Lyons TP, Miller JR, Fischer JD, Cleeton SH, Timothy P. 2012 Urbanization and the predation paradox: the role of trophic dynamics in structuring vertebrate communities. *Bioscience* **62**, 809–818. (doi:10.1525/bio.2012.62.9.6)
34. Contesse P, Hegglin D, Gloor S, Bontadina F, Deplazes P. 2004 The diet of urban foxes (*Vulpes vulpes*) and the availability of anthropogenic food in the city of. *Mamm. Biol.* **69**, 81–95. (doi:10.1078/1616-5047-00123)
35. Chamberlain DE, Vickery JA, Glue DE, Robinson RA, Conway GJ, Woodburn RJW, Cannon AR. 2005 Annual and seasonal trends in the use of garden feeders by birds in winter. *Ibis (Lond. 1859)* **147**, 563–575. (doi:10.1111/j.1474-919x.2005.00430.x)
36. Bateman PW, Fleming PA. 2012 Big city life: carnivores in urban environments. *J. Zool.* **287**, 1–23. (doi:10.1111/j.1469-7998.2011.00887.x)
37. Athreya V, Odden M, Linnell JDC, Krishnaswamy J, Karanth KU. 2016 A cat among the dogs: leopard *Panthera pardus* diet in a human-dominated landscape in Western Maharashtra, India. *Oryx* **50**, 156–162. (doi:10.1017/S0030605314000106)
38. Fuller RA, Warren PH, Armsworth PR, Barbosa O, Gaston KJ. 2008 Garden bird feeding predicts the structure of urban avian assemblages. *Divers. Distrib.* **14**, 131–137. (doi:10.1111/j.1472-4642.2007.00439.x)
39. Dunn EH, Tessaglia DL. 1994 Predation of birds at feeders in winter. *J. F. Ornithology* **65**, 8–16.
40. Kettel EF, Gentle LK, Quinn JL, Yarnell RW. 2017 The breeding performance of raptors in urban landscapes: a review and meta-analysis. *J. Ornithol.* **159**, 1–18. (doi:10.1007/s10336-017-1497-9)
41. Rosenfield RN, Bielefeldt J, Affeldt JL, Bechmann DJ. 1995 Nesting density, nest area reoccupancy, and monitoring implications for Cooper's hawks in Wisconsin. *J. Raptor Res.* **29**, 1–4.
42. Rosenfield RN, Mannan WR, Millsap BA. 2018 Cooper's hawks: the bold backyard hunters. In *Urban raptors: ecology and conservation of birds of prey in cities* (eds CW Boal, CR Dykstra), pp. 93–109. Washington, DC: Island Press.
43. Bildstein KL, Meyer KD. 2000 Sharp-shinned hawk (*Accipiter striatus*), version 2.0. In *Birds of North America* (ed. PG Rodewald). Ithaca, NY: Cornell Lab Ornithol. See <https://doi.org/10.2173/bna.482> (accessed 1 June 2018).
44. Curtis OE, Rosenfield RN, Bielefeldt J. 2006 Cooper's hawk (*Accipiter cooperii*). *The birds of North America online*. Cornell Lab Ornithol. See <http://bna.birds.cornell.edu/bna/species/075>.
45. Wiggers EP, Kritz KJ. 1991 Comparison of nesting habitat of coexisting sharp-shinned and Cooper's hawks in Missouri. *Wilson Bull.* **103**, 568–577.
46. Boal CW, Dykstra CR. 2018 *Urban raptors: ecology and conservation of birds of prey in cities*. Washington, DC: Island Press.
47. Roth TC, Lima SL. 2003 Hunting behavior and diet of Cooper's hawks: an urban view of the small-bird-in-winter paradigm. *Condor* **105**, 474–483. (doi:10.1650/7219)
48. Trewartha GT, Horn LH. 1980 *Introduction to climate*, 5th edn. New York, NY: McGraw-Hill.
49. National Oceanic and Atmospheric Administration. In press. *NOAA Online Weather Data*. Silver Spring, MD: NOAA.
50. US Census Bureau. 2016 *TIGER/Line Shapefiles (machine-readable data files)*. Suitland, MD: US Census Bureau.
51. Wells JV, Rosenberg KV, Dunn EH. 1998 Feeder counts as indicators of spatial and temporal variation in winter abundance of resident birds. *J. F. Ornithol.* **69**, 577–586.
52. Zuckerberg B, Bonter DN, Hochachka WM, Koenig WD, DeGaetano AT, Dickinson JL. 2011 Climatic constraints on wintering bird distributions are modified by urbanization and weather. *J. Anim. Ecol.* **80**, 403–413. (doi:10.1111/j.1365-2656.2010.01780.x)
53. Yin H, Khamzina A, Pflugmacher D, Martius C. 2017 Forest cover mapping in post-Soviet Central Asia using multi-resolution remote sensing imagery. *Sci. Rep.* **7**, 1–11. (doi:10.1038/s41598-017-01582-x)
54. CMAP: Chicago Metropolitan Agency for Planning. 2010 *High-resolution land cover*, Cook County.
55. Gray J, Song C. 2013 Consistent classification of image time series with automatic adaptive signature generalization. *Remote Sens. Environ.* **134**, 333–341. (doi:10.1016/j.rse.2013.03.022)
56. Chiang SN, Bloom PH, Bartuszevige AM, Thomas SE. 2012 Home range and habitat use of Cooper's hawks in urban and natural areas. *Urban Bird Ecol. Conserv. Stud. Avian Biol.* **45**, 1–16.
57. Markwardt CB. 2008 Non-linear least squares fitting in IDL with MPFIT. *Astron. Data Anal. Softw. Syst. XVII* **XXX**, 1–4. (doi:citeulike-article-id:4067445)
58. Daly C, Taylor G, Gibson W. 1997 The prism approach to mapping precipitation and temperature. *AMS Conf. Appl. Climatol.* **10**, 1–4.
59. Sibley D. 2000 *The Sibley guide to birds*. New York, NY: Alfred A. Knopf.

60. Mitch Waite Group. 2008 *iBird*. See <http://ibird.com>.
61. Dormann CF *et al.* 2012 Collinearity: a review of methods to deal with it and a simulation study evaluating their performance. *Ecography (Cop.)* **36**, 027–046. (doi:10.1111/j.1600-0587.2012.07348.x)
62. MacKenzie DI, Nichols JD, Royle JA, Pollock KH, Bailey LL, Hines JE. 2006 *Occupancy estimation and modeling: inferring patterns and dynamics of species occurrence*. Burlington, MA: Academic Press.
63. Royle JA, Kéry M. 2007 A Bayesian state-space formulation of dynamic occupancy models. *Ecology* **88**, 1813–1823. (doi:10.1890/06-0669.1)
64. Royle JA, Nichols JD, Kéry M. 2005 Modelling occurrence and abundance of species when detection is imperfect. *Oikos* **110**, 353–359. (doi:10.1111/j.0030-1299.2005.13534.x)
65. Kéry M, Royle JA. 2016 *In applied hierarchical modeling in ecology*. New York, NY: Academic Press.
66. Plummer M. 2003 JAGS: a program for analysis of Bayesian graphical models using Gibbs sampling. See <https://r-project.org/conferences/DSC-2003/drafts/Plummer.pdf>.
67. R Core Team. 2016 *R: a language and environment for statistical computing*. Vienna, Austria: R Foundation for Statistical Computing.
68. Keller K. 2017 jagsUI: a wrapper around 'rjags' to streamline 'JAGS' analysis. See <https://cran.mtu.edu/web/packages/jagsUI/jagsUI.pdf>.
69. Gelman A, Rubin DB. 1992 Inference from iterative simulation using multiple sequences. *Stat. Sci.* **7**, 457–472. (doi:10.1214/ss/1177011136)
70. Cruz J, Windels SK, Thogmartin WE, Crimmins SM, Grim LH, Zuckerberg B. 2018 Managing individual nests promotes population recovery of a top predator. *J. Appl. Ecol.* **55**, 1418–1429. (doi:10.1111/1365-2664.13062)
71. Hansen AJ, Knight RL, Marzluff JM, Powell S, Gude PH, Jones K. 2005 Effects of exurban development on biodiversity: patterns, mechanisms, and research needs. *Ecol. Appl.* **15**, 1893–1905. (doi:10.1890/05-5221)
72. Roth II TC, Vetter WE, Lima SL. 2008 Spatial ecology of wintering *Accipiter* hawks: home range, habitat use, and the influence of bird feeders. *Condor* **110**, 260–268. (doi:10.1525/cond.2008.8489)
73. Mannan RW, Boal CW. 2000 Home range characteristics of male Cooper's hawks in an urban environment. *Willson Bull.* **112**, 21–27. (doi:10.1676/0043-5643(2000)112[0021:HRCOMC]2.0.CO;2)
74. Butler SJ, Mattison EHA, Glithero NJ, Robinson LJ, Atkinson PW, Gillings S, Vickery JA, Norris K. 2010 Resource availability and the persistence of seed-eating bird populations in agricultural landscapes: a mechanistic modelling approach. *J. Appl. Ecol.* **47**, 67–75. (doi:10.1111/j.1365-2664.2009.01750.x)
75. Cooper NW, Sherry TW, Marra PP, Inouye BD. 2015 Experimental reduction of winter food decreases body condition and delays migration in a long-distance migratory bird. *Ecology* **96**, 1933–1942. (doi:10.1890/14-1365.1)
76. Fuller T, Sievert P. 2001 Carnivore demography and the consequences of changes in prey availability. In *Carnivore conservation* (eds JL Gittleman, SM Funk, D Macdonald, RK Wayne), pp. 163–179. Cambridge, UK: Cambridge University Press.
77. Athreya V, Odden M, Linnell JDC, Krishnaswamy J, Karanth U. 2013 Big cats in our backyards: persistence of large carnivores in a human dominated landscape in India. *PLoS ONE* **8**, e57872. (doi:10.1371/journal.pone.0057872)
78. Bell CP, Baker SW, Parkes NG, Brooke MDL, Chamberlain DE. 2010 The role of the Eurasian sparrowhawk (*Accipiter nisus*) in the decline of the house sparrow (*Passer domesticus*) in Britain. *Auk* **127**, 411–420. (doi:10.1525/auk.2009.09108)
79. Drennan JE, Beier P. 2003 Forest structure and prey abundance in winter habitat of Northern Goshawks. *J. Wildl. Manage.* **67**, 177–185. (doi:10.2307/3803073)
80. Chamberlain DE, Glue DE, Toms MP. 2009 Sparrowhawk *Accipiter nisus* presence and winter bird abundance. *J. Ornithol.* **150**, 247–254. (doi:10.1007/s10336-008-0344-4)
81. Cava JA, Stewart AC, Rosenfield RN. 2012 Introduced species dominate the diet of breeding urban Cooper's hawks in British Columbia. *Wilson J. Ornithol.* **124**, 775–782. (doi:10.1676/1559-4491-124.4.775)
82. Bigelow DP, Borchers A. 2017 *Major uses of land in the United States, 2012*. Washington, DC: Department of Agriculture, Economic Research Service.